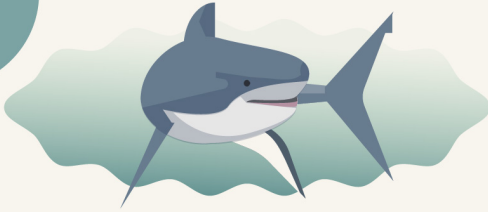


# WHOSE TOOTH IS THIS?



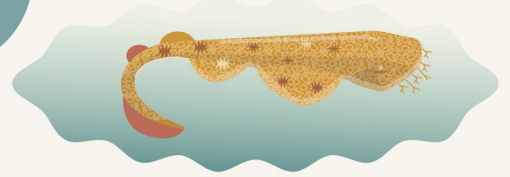
## SAWING



Sharks use these teeth for cutting up large prey like whales and seals—e.g. great white shark.



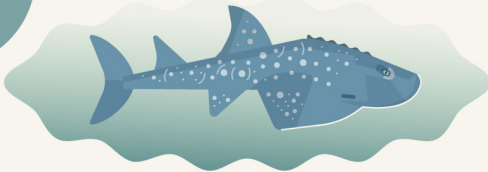
## PIERCING



Sharks with these teeth can grab slippery, fast-moving prey like stingrays and squid—e.g. tassled wobbegong.



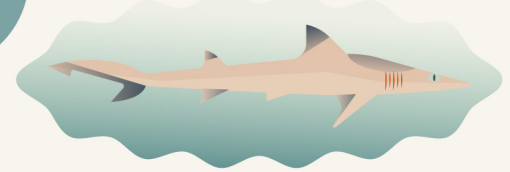
## GRINDING



Sharks use these dense, flat teeth to crack and grind prey with shells—e.g. bowmouth guitarshark.



## HOOKING



The long, hooked shape of these teeth helps sharks grip slippery fish—e.g. hooktooth sharks.



## DID YOU KNOW?

Sharks don't have a set number of teeth, instead their teeth fall out and are replaced continuously.