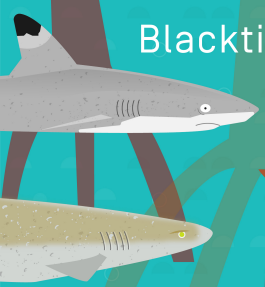


# D'ARROS ISLAND & ST. JOSEPH ATOLL: ABUNDANCE & BIODIVERSITY

● = Threatened



Blacktip reef shark

● Sicklefim lemon shark



Broad cowtail ray

● Eagle ray

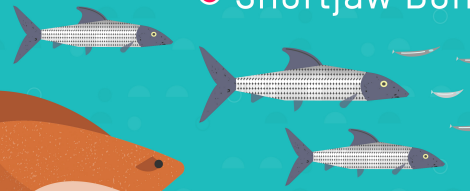


Potato cod

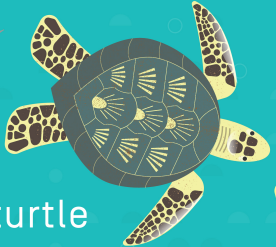
● Bottlenose wedgefish



● Shortjaw Bonefish



● Green turtle



Torpedo ray



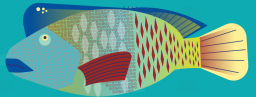
● Porcupine ray



● Mangrove whipray



● Humphead wrasse



Eviota dalyi



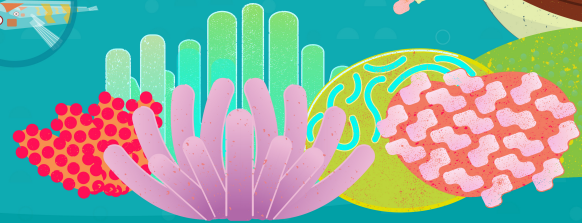
● Hawksbill turtle



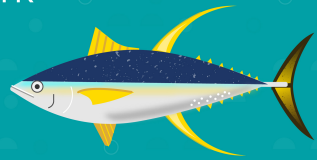
● Tawny nurse shark



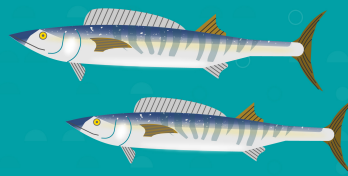
● Manta ray



● Great hammerhead shark

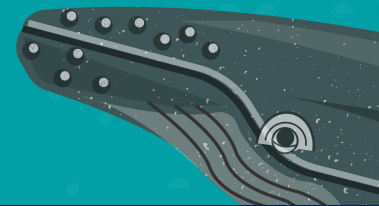


Yellowfin tuna



Wahoo

Humpback whale



## PROJECTS WORKED ON



423 acoustic tags



28 research projects



16 years turtle monitoring

## SPECIES FOUND

530+ fish species including



12+



9+

