

lost world

THE MARINE REALM OF THE SEYCHELLES

CHAPTER 2: THE GRANITE ISLANDS

Workbook by John Christian D. Florescu



For more education resources please visit:

www.saveourseas.com

preface

This workbook is designed to be a teaching/learning resource for use in conjunction with *Lost World: The Marine Realm of the Seychelles* by Thomas P. Peschak. Structured in accordance with the current framework of the Seychelles' national school curriculum KS3/4, it combines English language/literacy, numeracy, science, general knowledge and conservation awareness.

Education is of paramount importance in any culture and, with this in mind, the booklet enables teachers and learners to engage with a subject that has great significance both now and in the future. It promotes independent and group study, and encourages students to think about and discuss the ecosystem around them as they learn by accomplishing creative and stimulating tasks.

I am confident you will find this resource both educational and enjoyable, as it inspires participants to become more aware of and knowledgeable about the ecology of their surroundings.

John Christian D. Florescu

TASK 1: Descriptive narrative writing

Study the photograph on pages 68–69. Imagine that you are a bird migrating to the granite islands for the first time. In approximately 500 words, write an account of what you observe from your bird’s-eye view. Pay particular attention to detail when describing your first impressions: does the reality live up to your expectations? Write about the turquoise ocean and its calm stillness. What is the climate like and how does it compare to where you have travelled from?

- **Structure** (how you describe what you see). Make some of your sentences simple, some connective and some complex, and include adjectives, adverbs, similes, metaphors and personification.
- **Content** (what you actually say). Is it ‘right’ and is it interesting?
- **Organisation** (how you lay out your writing). Is it ‘right’ and is it clear?
- **Accuracy** (words, spelling and grammar). Are they the ‘right’ words in the ‘right’ style?
- **Effect** (how you create an impact). Have you grabbed the reader and made them feel what you intended?

TASK 2: Fill in the gaps

Complete the sentence below by placing the following words in the correct positions:

sea
paradise

collection
emerald

islands
floating

An almost unfathomably beautiful _____ of _____-green, mountainous islands _____ on a turquoise _____, the inner _____ of the Seychelles could at times be mistaken for a too-perfect cliché of _____.

TASK 2a: Commission writing

'The Seychelles could at times be mistaken for a too-perfect cliché of paradise.'

What does the author imply by this statement? Can you find evidence within the text or photographs that supports his viewpoint? Give examples.

As a native resident of the Seychelles, do you share his viewpoint? Explain your answer by using supportive arguments. Also think about:

- **Genre** – what form are you writing? Is it an article, a manuscript, a poem, a letter or a story?
- **Audience** – who are you writing it for? Children or adults, men or women?
- **Purpose** – why are you writing it? To persuade, argue or review?
- **Style** – how are you writing it? Is the tone formal or chatty, serious or comic?

TASK 3: Sir Arthur Conan Doyle



The granite islands are at least 650 million years old. They are host to a unique and eccentric assemblage of plants and animals. Putting yourself in the shoes of author and historian Sir Arthur Conan Doyle, write an account of life on the granite islands in prehistoric times. Use **ISPACED** sentence openers (see the examples below).

I = ing. 'Smiling, the man opened the door.'

S = simile. 'As quiet as a mouse, she walked in.'

P = preposition. 'In a moment,' 'On an impulse,' 'Under his feet,' 'Over the fence,'

A = adverb. 'Quietly, she read her book.'

C = connective. 'While she waited, he made the tea.'

E = ed. 'Stunned, George stood still.'

D = dialogue speech. "'I'm on my way,'" called the policeman.'

TASK 4: Reading comprehension

1) The world's largest fish is native to the Seychelles. What is it?

.....

2) How many years does the relationship between the Seychellois and whale sharks date back?

.....

3) Name two strange animals that are native to the granite islands.

.....

.....

4) What is the Latin scientific name given to the red hermit crab?

.....

5) The hermit crab is an omnivore. What does it typically eat?

.....

6) What is the name given to the largest shell-carrying crab?

.....

7) What is the preferred vegetation zone and diet of the red hermit crab?

.....

8) Where do hermit crabs begin their life cycle, and why is this?

.....

9) In which other countries can marine life native to the Seychelles also be found?

.....

10) Which are the two best-developed reefs in the granite islands?

.....

.....

11) What is the name given to the event in 1998 that had a catastrophic effect on the granite islands? What does it mean?

.....
.....

12) Which turtle inhabits the granite islands? What food type makes up 90% of its diet?

.....

13) How often does this turtle breed?

.....

14) About how many eggs does the female turtle lay in her nest over a two-week period?

.....

15) In 2007 a satellite tag was fitted to a female turtle. What was the breakthrough scientific evidence provided by the data from the tag?

.....

16) 'Sagren' is more commonly known by what name?

.....

17) In which months of the year are whale sharks most abundant in Seychelles waters? Why is this?

.....

18) Name two types of food favoured by whale sharks.

.....

.....

19) How many individual whale sharks visited the Seychelles between 2001 and 2007?

.....

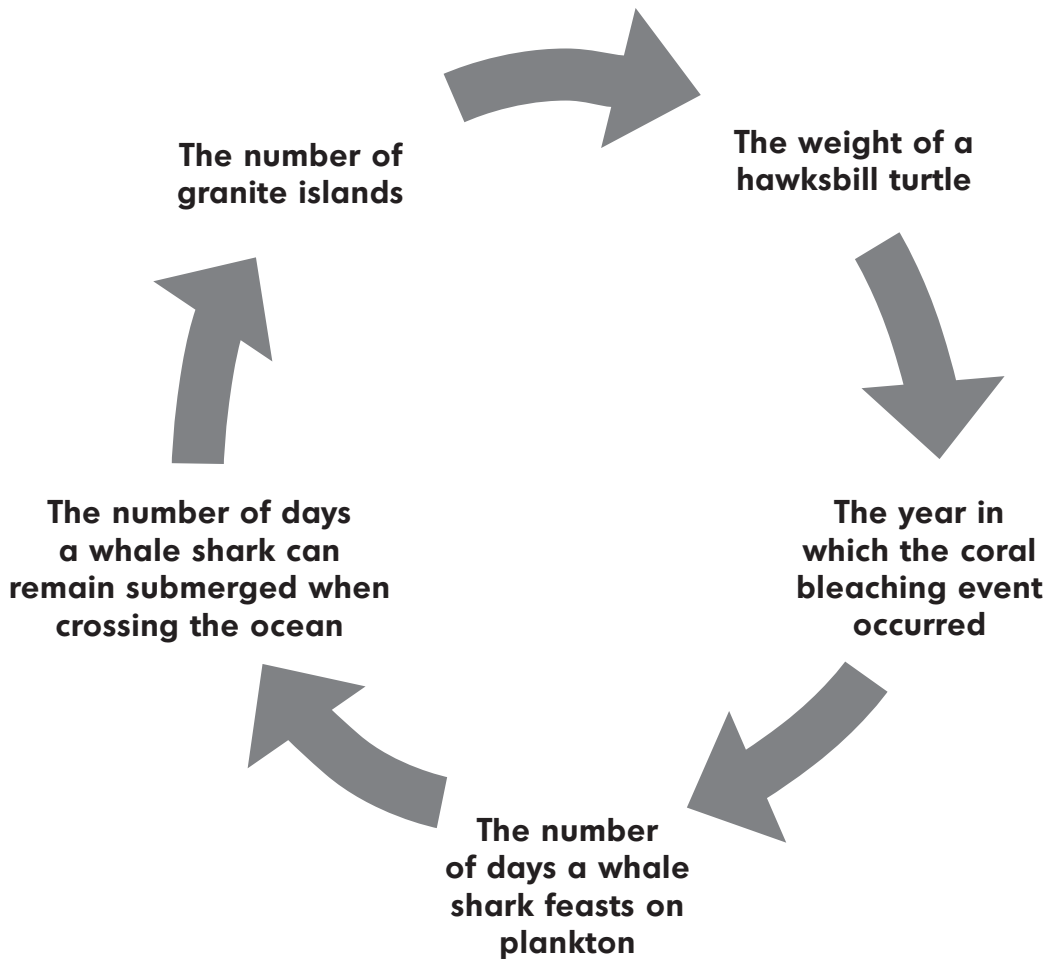
20) Do whale sharks migrate? Give evidence from the text to support your answer.

.....

TASK 5: Problem-solving fun

Using the clues in the cycle below, work out the numbers and the mathematical formulae that will give you the following answers:

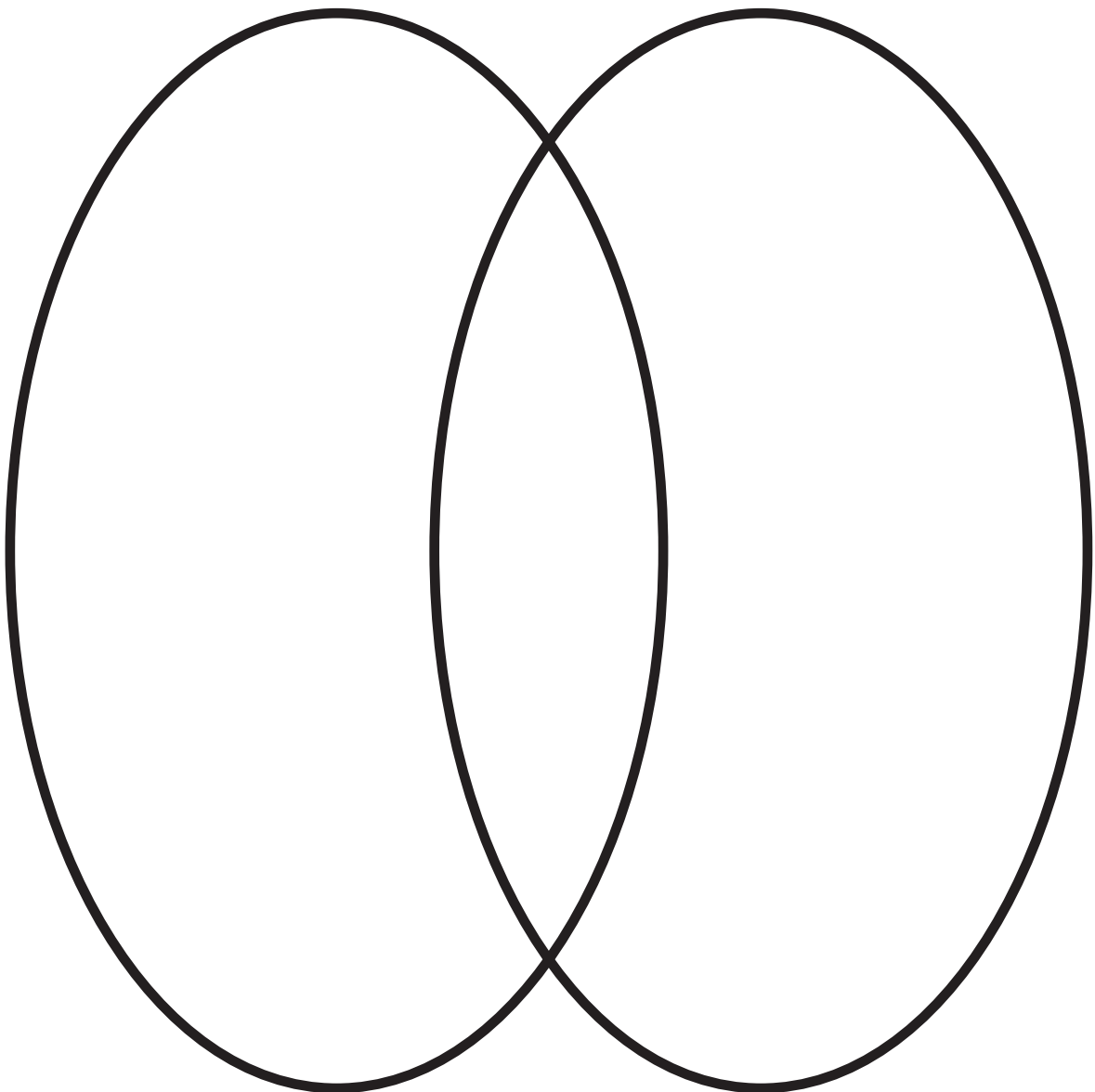
- 1) 2,222
- 2) 1,392.9



- 1)
- 2)
-

TASK 6: Comparing Aldabra & the granite islands

In the Venn diagram below, write the features that are different about Aldabra and the granite islands in the outer circles. Put the features that are similar in the central circle.



TASK 7: Word search

Find the following words in the search grid below:

***jellyfish organism larvae hermit plateau coral
animal marine tide prehistoric dusk***

J	B	A	N	I	M	A	L	C	Y	I	P
E	D	A	X	A	W	K	W	L	S	R	L
L	E	E	B	A	C	W	J	K	E	J	A
L	A	R	V	A	E	V	X	H	M	Z	T
Y	R	O	F	B	V	Z	I	G	L	C	E
F	D	F	X	G	V	S	H	I	M	N	A
I	L	N	G	U	T	U	D	T	O	H	U
S	A	T	C	O	R	G	A	N	I	S	M
H	R	Q	R	S	T	I	F	J	P	D	G
P	O	I	Y	H	D	U	S	K	O	Q	E
R	C	S	M	Z	R	T	I	M	R	E	H
T	E	N	I	R	A	M	E	R	L	Q	P

TASK 8: Word scramble

Unscramble each word below, write down its meaning and, using a thesaurus, choose two other words that could be used in its place.

Example

dawrwhit = *withdraw* = *to take out or to remove, extract*

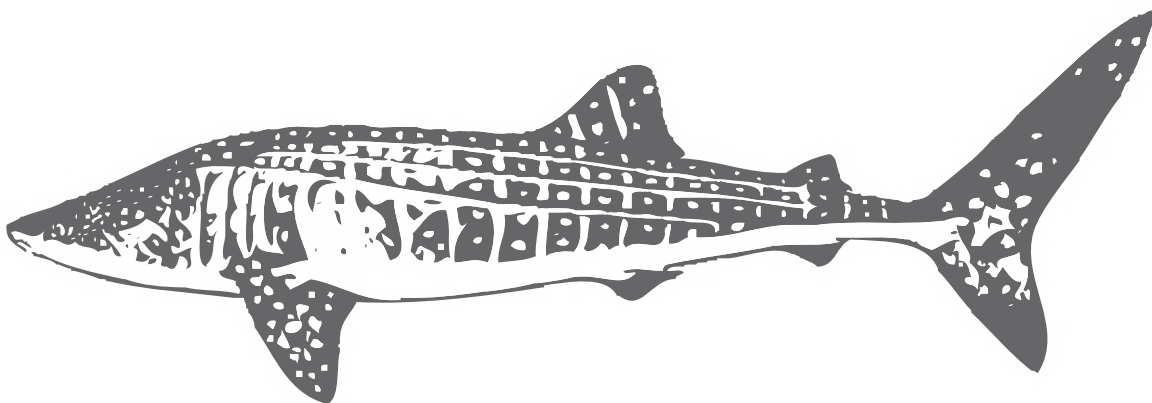
UNSCRAMBLE	WORD	MEANING	THESAURUS	THESAURUS
utasidet				
inleacnp				
emnagnired				
lvreicta				

TASK 9: Whale shark diagram

Whale sharks are the largest fish species on the planet, reaching lengths of more than 16 metres; in the Seychelles, however, most are subadults that average about six metres long. These giant fish don't have to move forward to feed and can actively pump as much as 1.7 litres of water over their gills every second, filtering it for zooplankton such as Lucifer shrimp. They often suction-feed in a near-vertical position, bobbing up and down close to the surface.

Use the following words to label the diagram:

caudal fin pelvic fin pectoral fin mouth dorsal fin
anal fin second dorsal fin lateral ridges gill slits eye



TASK 10: Art and design

From what you've read in the chapters about Aldabra and the granite islands, design a poster for the Seychelles Tourist Board. Showing the islands' rich and abundant environment, the poster should attract potential overseas visitors.

Before you start...

Think about the size, layout and design of your poster, who your target audience is, what the poster is trying to say, what its visual impact is and whether it stands out.

Teacher's Guide & Answers

TASK 1

Teacher discretion

TASK 2

An almost unfathomably beautiful **_collection_** of **_emerald-green,** mountainous islands **_floating_** on a turquoise **_sea,** the inner **_islands_** of the Seychelles could at times be mistaken for a too-perfect cliché of **_paradise.**

TASK 2a

Teacher discretion

TASK 3

Teacher discretion

TASK 4

- 1) The world's largest fish is native to the Seychelles. What is it?
Whale shark.
- 2) How many years does the relationship between the Seychellois and whale sharks date back?
Almost 300 years.
- 3) Name two strange animals that are native to the granite islands.
Magpie-robin and giant tenebrionid beetle.
- 4) What is the Latin scientific name given to the red hermit crab?
Coenobita perlatus.
- 5) The hermit crab is an omnivore. What does it typically eat?
Fallen fruit, rotting wood, animal carcasses and even tortoise faeces.

- 6) What is the name given to the largest shell-carrying crab?
Purple hermit crab (*Coenobita brevimanus*).
- 7) What is the preferred vegetation zone and diet of the red hermit crab?
Beach, where it eats washed-up morsels, including seed pods and jellyfish.
- 8) Where do hermit crabs begin their life cycle, and why is this?
At sea, because that is where the female sheds her eggs.
- 9) In which other countries can marine life native to the Seychelles also be found?
Madagascar, the Maldives and East African countries.
- 10) Which are the two best-developed reefs in the granite islands?
Mahé and Praslin.
- 11) What is the name given to the event in 1998 that had a catastrophic effect on the granite islands? What does it mean?
Coral bleaching. When corals are stressed by changes in conditions, such as temperature, light or the presence of nutrients, they expel the symbiotic algae living in their tissues. This causes them to turn completely white.
- 12) Which turtle inhabits the granite islands? What food type makes up 90% of its diet?
Hawksbill turtle. A few species of sponge.
- 13) How often does this turtle breed?
Every two or three years.
- 14) About how many eggs does the female turtle lay in her nest over a two-week period?
120–180 eggs.
- 15) In 2007 a satellite tag was fitted to a female turtle. What was the breakthrough scientific evidence provided by the data from the tag?
After she had laid her eggs at the southern end of Male, she swam 2,612 kilometres to Mitsio Island in Madagascar and stayed there until mid-2009.

- 16) 'Sagren' is more commonly known by what name?
The whale shark.
- 17) In which months of the year are whale sharks most abundant in Seychelles waters? Why is this?
August–October. This is when the waters contain the largest densities of plankton for the whale sharks to feed on.
- 18) Name two types of food favoured by whale sharks.
Lucifer shrimps and chaetognaths.
- 19) How many individual whale sharks visited the Seychelles between 2001 and 2007?
360.
- 20) Do whale sharks migrate? Give evidence from the text to support your answer.
Yes.

TASK 5

- 1) 2,222. Starting anywhere, add together all the numbers (1998 + 60 + 43 + 41 + 80).
- 2) 1,392.9. Starting at the coral bleaching event, divide 1998 by 60, multiply by 43, add 41 and subtract 80.

TASK 6

Teacher discretion

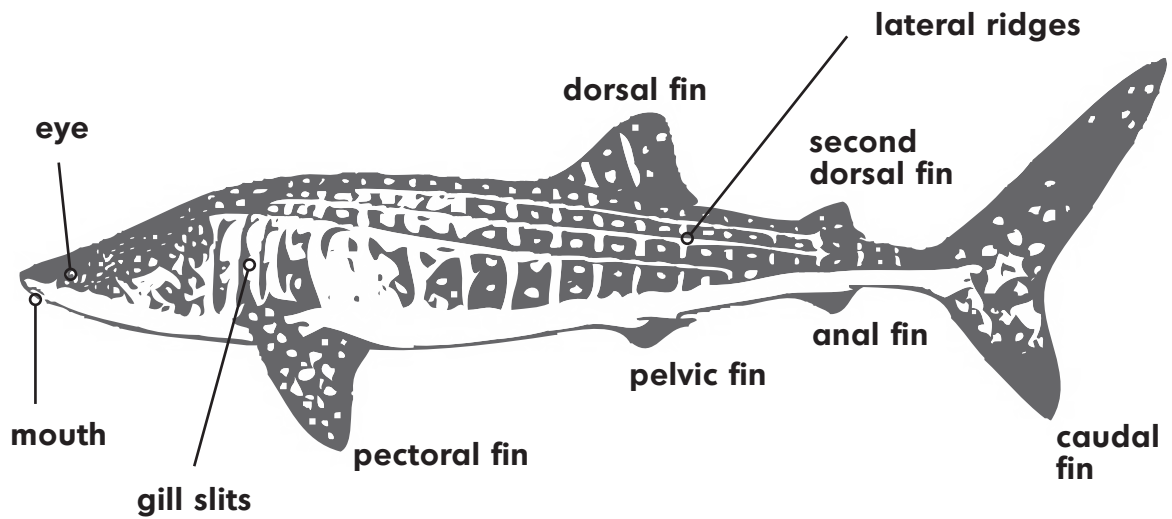
TASK 7

J	B	A	N	I	M	A	L	C	Y	I	P
E	D	A	X	A	W	K	W	L	S	R	L
L	E	E	B	A	C	W	J	K	E	J	A
L	A	R	V	A	E	V	X	H	M	Z	T
Y	R	O	F	B	V	Z	I	G	L	C	E
F	D	F	X	G	V	S	H	I	M	N	A
I	L	N	G	U	T	U	D	T	O	H	U
S	A	T	C	O	R	G	A	N	I	S	M
H	R	Q	R	S	T	I	F	J	P	D	G
P	O	I	Y	H	D	U	S	K	O	Q	E
R	C	S	M	Z	R	T	I	M	R	E	H
T	E	N	I	R	A	M	E	R	L	Q	P

TASK 8

UNSCRAMBLE	WORD	MEANING	THESAURUS	THESAURUS
utasidet	situated	In a particular position.	located	positioned
inleacnp	pinnacle	The most successful or admired part of a system or achievement.	peak	apex
emnagnired	meandering	Moving slowly in no particular direction or with no clear purpose.	twisty	winding
lvreicta	vertical	Standing or pointing straight up or at an angle of 90° to a horizontal surface or line.	upright	perpendicular

TASK 9



TASK 10

Teacher discretion